

Hempstead Hwy Area Land

**2.037
Acres**

For Sale or Build-To-Suit



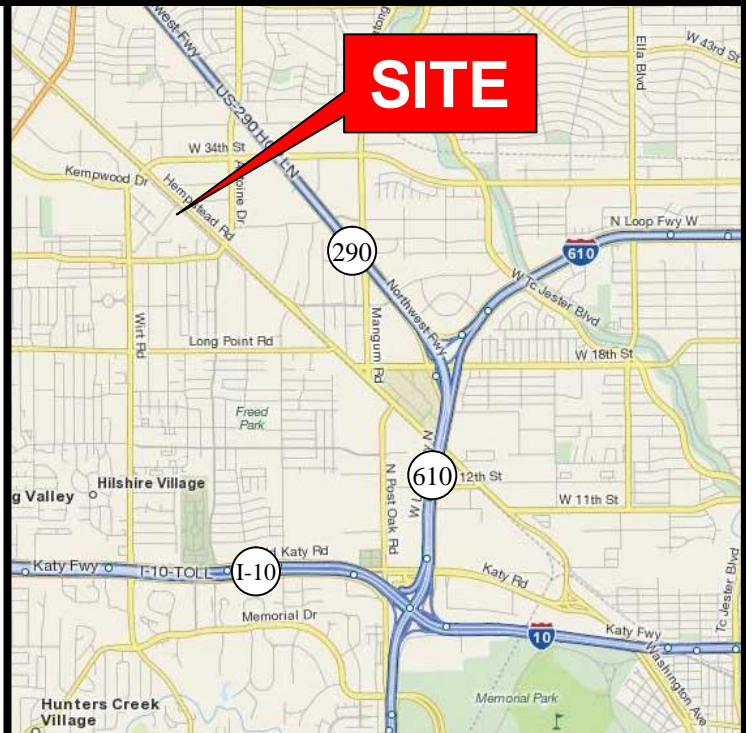
For Sale: \$790,000 (\$8.90 PSF) or Build-to-Suit

Location:

- 11445 Todd St: Houston, TX 77055
- Between Antoine & 34th (Kempwood)
- Key Map 451P

Features:

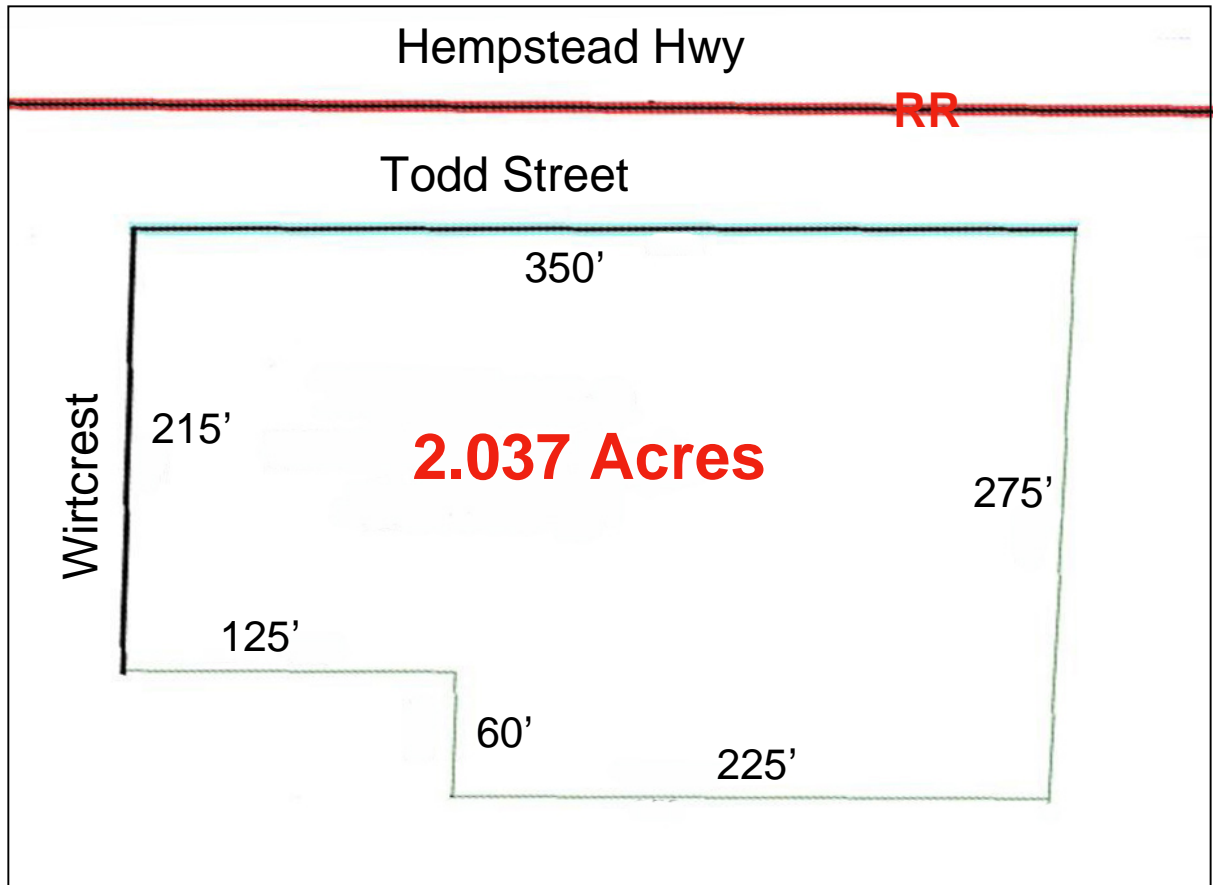
- 88,732 Sq.Ft. (2.037 acres)
- 350 feet of frontage on Todd St.
- 215 feet of frontage on Wirtcrest
- City of Houston utilities
- Not in 100 year flood plain
- Great visibility from Hempstead
- Central location to granite/tile sector
- Already 100% stabilized
- No detention requirement



Capital Real Estate Commercial, Inc.

7720 Westview Drive • Houston, TX 77055
Phone (713) 681-1100 • Fax (713) 681-1114

Hart (713) 907-3570
hschleicher@credtexas.com
Richard (281) 932-9414
rrolland@credtexas.com



SITE

Detailed description: A regional map of the Houston, Texas area. Major highways shown include I-10, I-45, I-610, I-290, and US-290. Neighboring cities like Sugar Land, Missouri City, Spring Valley, and Pearland are labeled. A red arrow points from a red box labeled 'SITE' to a specific location in the Spring Valley area, near the intersection of I-45 and I-610.