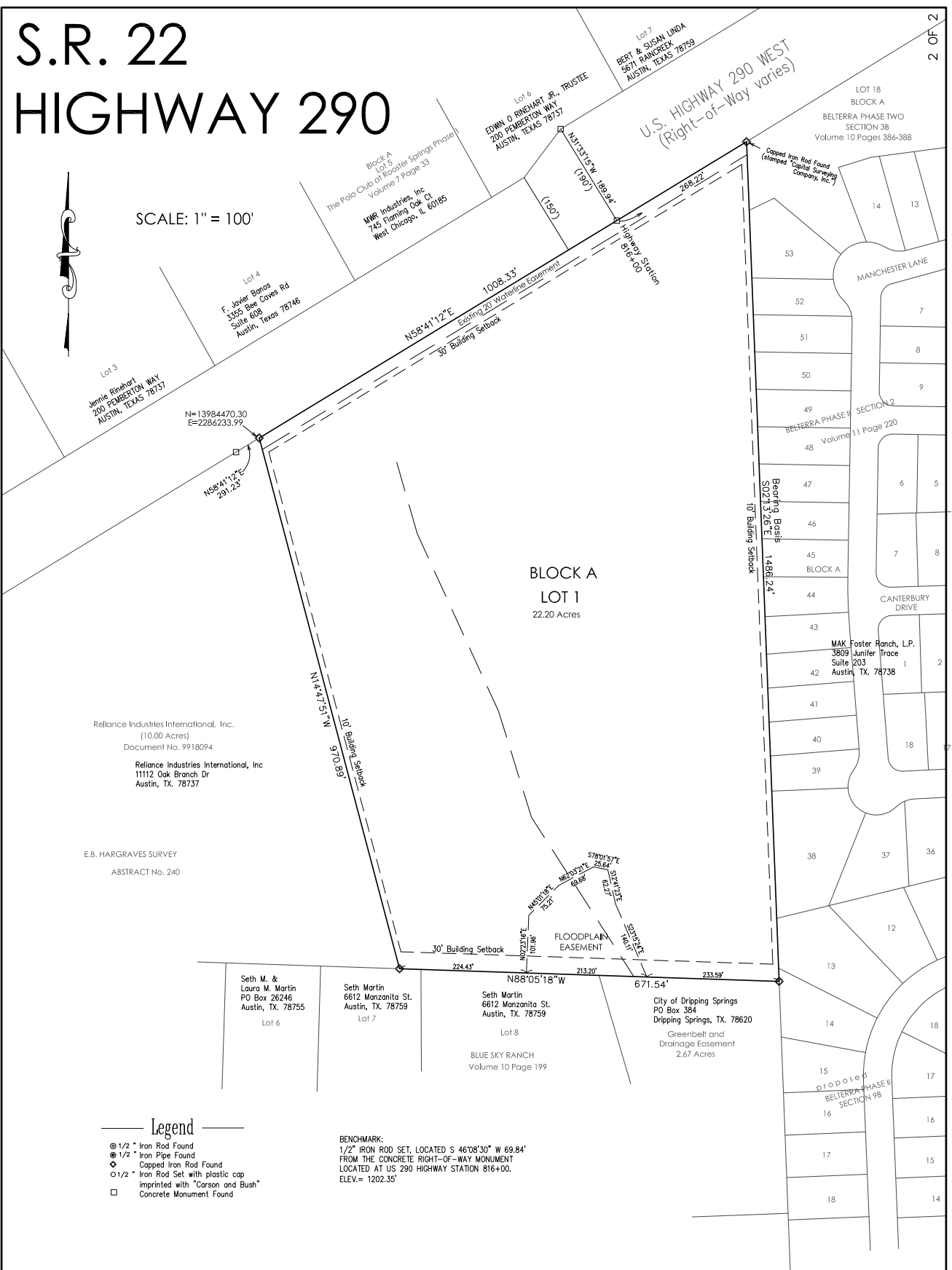


# S.R. 22 HIGHWAY 290



SCALE: 1" = 100'



Reliance Industries International, Inc.  
(10.00 Acres)  
Document No. 9918094

Reliance Industries International, Inc  
11112 Oak Branch Dr  
Austin, TX. 78737

E.B. HARGRAVES SURVEY  
ABSTRACT No. 240

Seth M. &  
Laura M. Martin  
PO Box 26246  
Austin, TX. 78755  
Lot 6

Seth Martin  
6612 Manzanita St.  
Austin, TX. 78759  
Lot 7

Seth Martin  
6612 Manzanita St.  
Austin, TX. 78759  
Lot 8

BLUE SKY RANCH  
Volume 10 Page 199

City of Dripping Springs  
PO Box 384  
Dripping Springs, TX. 78620  
Greenbelt and  
Drainage Easement  
2.67 Acres

MAK Foster Ranch, L.P.  
3809 Junifer Trace  
Suite 203  
Austin, TX. 78738

- Legend**
- ⊙ 1/2" Iron Rod Found
  - ⊙ 1/2" Iron Pipe Found
  - ◆ Capped Iron Rod Found
  - 1/2" Iron Rod Set with plastic cap imprinted with "Carson and Bush"
  - Concrete Monument Found

**BENCHMARK:**  
1/2" IRON ROD SET, LOCATED S 46°08'30" W 69.84'  
FROM THE CONCRETE RIGHT-OF-WAY MONUMENT  
LOCATED AT US 290 HIGHWAY STATION 816+00.  
ELEV.= 1202.35'